

UNIT SPECIFICATIONS

MODEL # 1705 REV LEVEL:00 P/N: 336427002
Storage Strap

Project Manager: Jaleel
 Document Rev: 00

- Notes :1、 Based on model main changes sign with “▼”
 2、 document modification sign with green color 11111

Product description



Storage Strap:
 Perfect Storage Solution for Power
 Cords,Ropes,Hoses,Christmas
 Light,Etc.

1.Key Features

<input checked="" type="checkbox"/> New Model	<input type="checkbox"/> Based on Model:	
	Main changes/features	

2.Require Certifications

<input type="checkbox"/> EPA EXH Phase 3	<input type="checkbox"/> EVAP CARB	<input type="checkbox"/> USDA FS Approval	<input checked="" type="checkbox"/> RoHS
<input type="checkbox"/> CARB EXH	<input type="checkbox"/> cETL	<input type="checkbox"/> FCC (Remote Control)	<input type="checkbox"/> OSHA
<input type="checkbox"/> EVAP EPA	<input type="checkbox"/> CSA	<input type="checkbox"/> FCC (Complete Generator)	

3.General Information

Brand : Firman	Unit Weight (lbs) : 0.17	Shipping Weight (lbs):0.22
Supplier: PSK	UPC: 840876100714	Carton Dimension (LxWxH) (inch): 21.1×13.8×7.9
Warranty (day) : 120	Max Units Per container: 22000/40HQ	

4.Packaging

Pallet	Yes
Carton	Litho (Black)
Language	English/Spanish/French
Fixed board	Yes (4 colors)
Other	

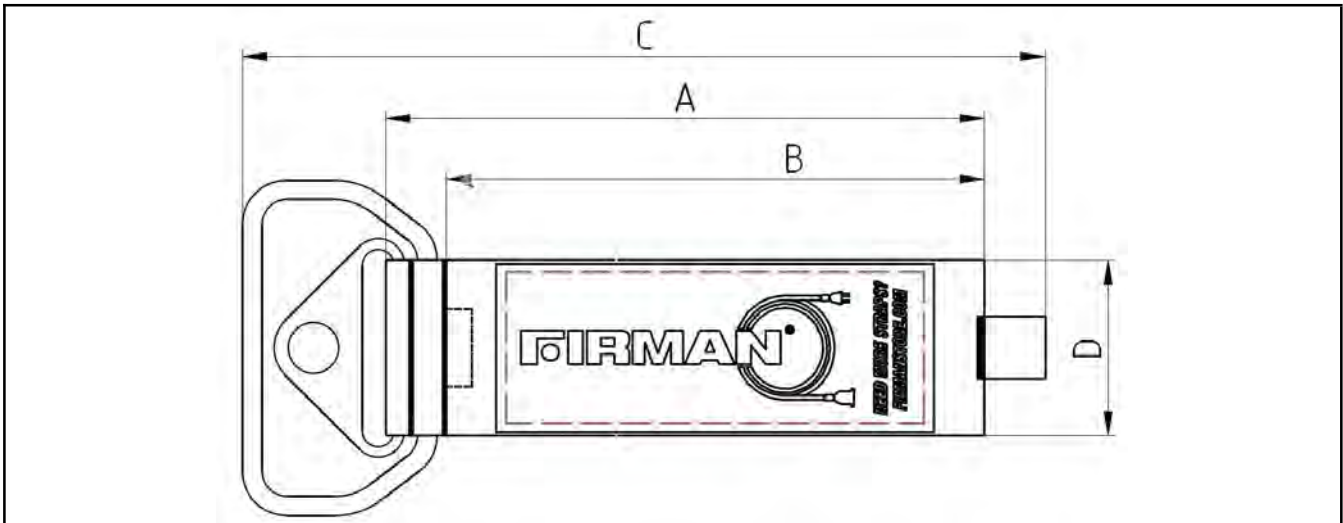
5.Other Features

Other: <input type="checkbox"/>	Other: shippable by UPS	Other: <input type="checkbox"/>	Other: <input type="checkbox"/>
Other: <input type="checkbox"/>	Other: <input type="checkbox"/>	Other: <input type="checkbox"/>	Other: <input type="checkbox"/>

General Notes:

1. **Dimensions:** Unit dimensions are the outside dimensions of the carton.
2. **Weight:** Unit weight is for a complete packaged unit.
3. **Enclosures:**
 - a. Whether constructed of metal or plastic, enclosures must be sufficiently strong to perform their required duty without damage.
 - b. All polymeric enclosures must be sufficiently strong to pass the CSA C22.2 No. 100-04 Impact Test.
 - c. All polymeric enclosures exposed to sunlight must contain appropriate UV stabilizers.
4. **Decals/labels:**
 - a. Decals must be impervious to water, gasoline, and sunlight and suitable for long-term outdoor exposure.
 - b. Decals must be free of wrinkles and bubbles after installation.
 - c. Decals must be positioned correctly. Crooked decals are not acceptable.
5. **Packaging:**
 - a. EAN/UPC decal and serial number decal: The serial numbers of the units on the skid must be visible and not covered by other units.
 - b. Dirt: The products must be cleaned before shipping. Dirt on products is not acceptable.
 - c. Big plastic bag: The big plastic bag for packaging the unit must be printed with "Suffocation Warning" in English, French, and Spanish.
 - d. Pallets and internal wooden parts will require fumigation.
 - e. Units must be packaged and palletized appropriately to prevent damage during transportation and handling. The units on the pallet must be wrapped together.
6. **Banned materials:** Asbestos, Cadmium (Cd), Mercury (Hg), and Lead (Pb) are not allowed in any components.
7. **Protection against corrosion:** All material including hinges, guards, enclosures, and frames formed of iron or steel shall be protected against corrosion by painting, galvanizing, plating, or by other equivalent means.
8. **Sharp edges:** An edge, a projection, and a corner of an enclosure, frame, guard, or the like, shall be smooth and rounded, and not sufficiently sharp to constitute a risk of injury to persons in normal maintenance and use of a product.

6.Overall Dimensions



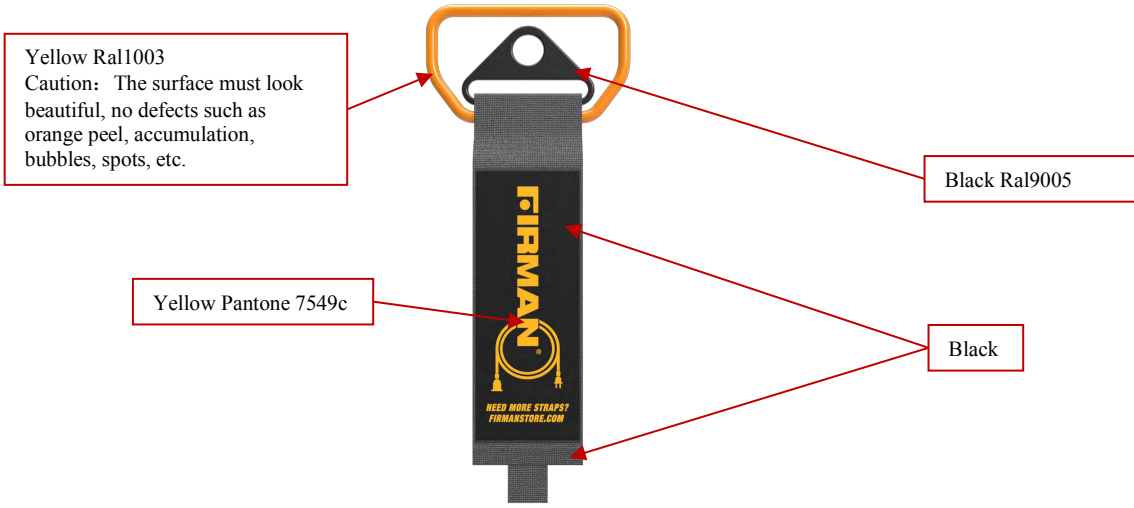
Model /Dimension	A	B	C	D
(mm)	170	145	229	50
(in)	6.7	5.7	9	2

UNIT SPECIFICATIONS

MODEL # 1705 REV LEVEL:00 P/N: 336427002
Storage Strap

Unit information

Color system



FIRMAN Logo parts



STORAGE STRAP



FIXED BOARD

UNIT SPECIFICATIONS

MODEL # 1705 REV LEVEL:00 P/N: 336427002
Storage Strap

Configuration

Step 1: Glue a small fixed plate onto the fixed board

Step 2: To reinforce with staples.

Step 3: Fix the storage strap then fix the board with staple

The diagram illustrates the assembly process for the storage strap. It shows a blue fixed board with a small fixed plate being glued to it. The board is then reinforced with staples. Finally, the storage strap is fixed to the board with a staple. The product is shown in its retail packaging, which includes a hand holding the strap and a list of features in multiple languages.

7.Package

Packing instruction

Storage straps with fixed board(50Pcs)

Pearl cotton board

carton

The diagram shows a perspective view of a cardboard carton being packed with storage straps. The straps are stacked in a neat pile. Labels with red arrows point to the 'Storage straps with fixed board(50Pcs)', the 'Pearl cotton board' (the top and bottom layers of the carton), and the 'carton' itself.

UNIT SPECIFICATIONS

MODEL # 1705 REV LEVEL:00 P/N: 336427002
Storage Strap

Front

Back

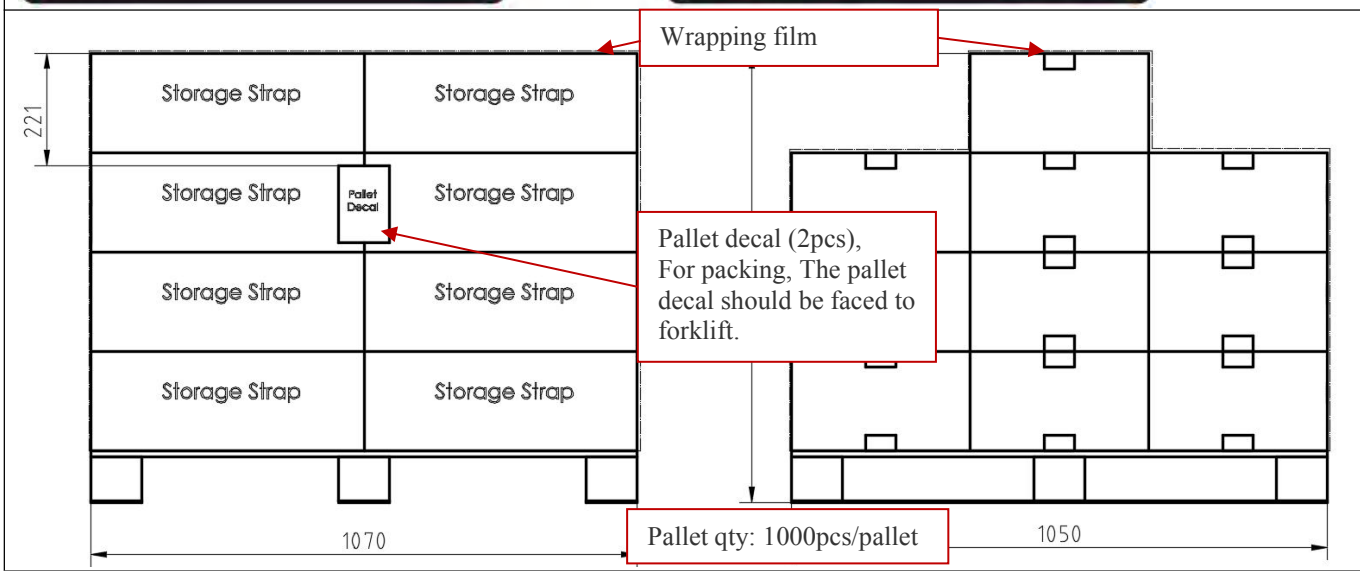
Specifications and load bearing of strap

- 2x6 in / 5x14.5 cm
- Holds up to 22 lbs. / 10 KG

California Prop 65

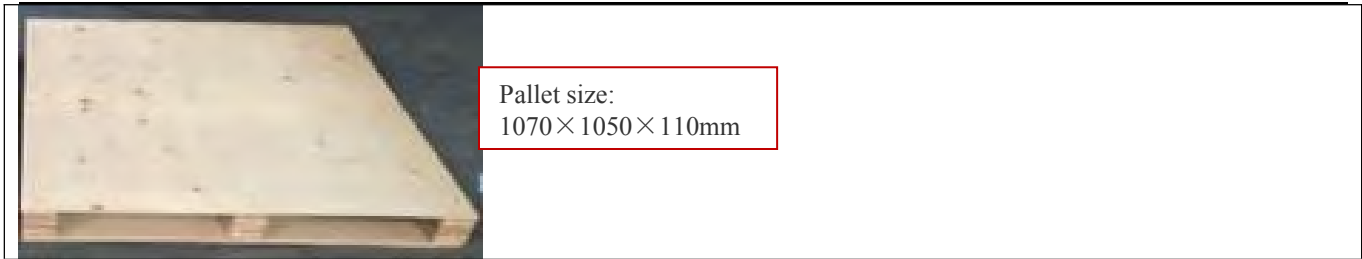
Warranty logo

UPC



UNIT SPECIFICATIONS

MODEL # 1705 REV LEVEL:00 P/N: 336427002
Storage Strap



NOTE : Any flexible film bags having an opening equal to or greater than 14” (355.6mm) circumference shall warn users of “Suffocation warning” and be punched with holes. Specific warnings and punching Requirements need to see design drawing.

8.Package Decals

Pallet decal P/N : 336737035 Rev : 00	Outer packing carton P/N : 336747052 Rev : 00

9.Shipping information

Carton dimension (External) 纸箱外部尺寸				Unit weight 运输整机重量	
	L	W	H	kg	lbs
(mm)	535	350	200	7	15.4
(in)	21.1	13.8	7.9		

Pallet dimension 托盘尺寸				Pallet weight 托盘重量	
	L	W	H	kg	lbs
(mm)	1070	1050	110	10.5	23.1
(in)	42.1	41.3	4.33		

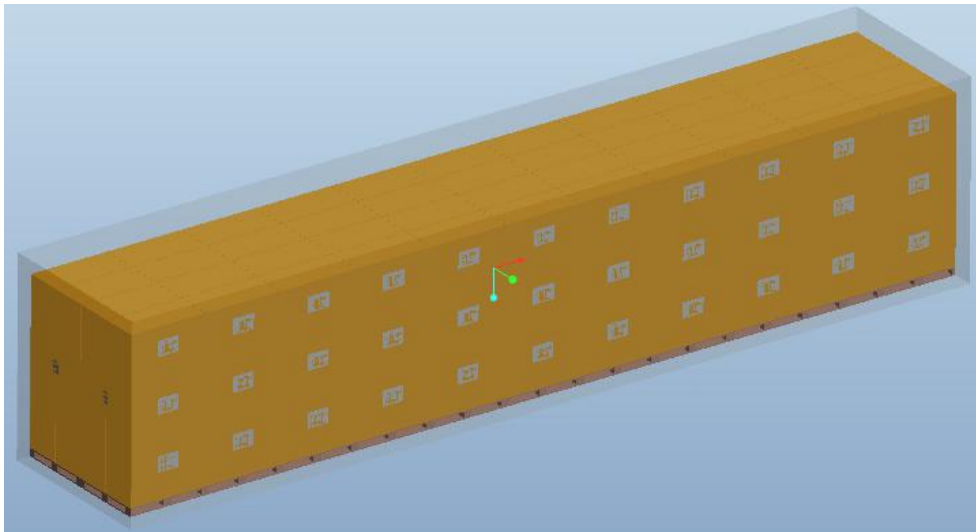
Pallet layout 托盘布置 (台数)			Units Per pallet 台数/托	Pallet weight (with unit) 托盘总重量	
L	W	H		kg	lbs
3	2	3+1*2	1000	150.5	331.8

UNIT SPECIFICATIONS

MODEL # 1705 REV LEVEL:00 P/N: 336427002
Storage Strap

Full pallet dimension 整托尺寸 (mm)			Full pallet dimension 整托尺寸 (in)		
L	W	H	L	W	H
1070	1050	910	42.1	41.3	35.8

Container quantity 装柜数量		Total weight 总重	
Total pallets 总托盘数	Total units 总机组数量	kg	lbs
22	22000	3311	7300



Revisions				
REV	Change page	Description	Date	By
00			2018-11-01	SZH

编制/TRACED	校对/PROOFREAD	认证审核 /Certification audit	审核/CHECKED	批准/APPROVED
Shi Zhihao	Ma Jiazhong	Wu Yue	Jaleel	Michael